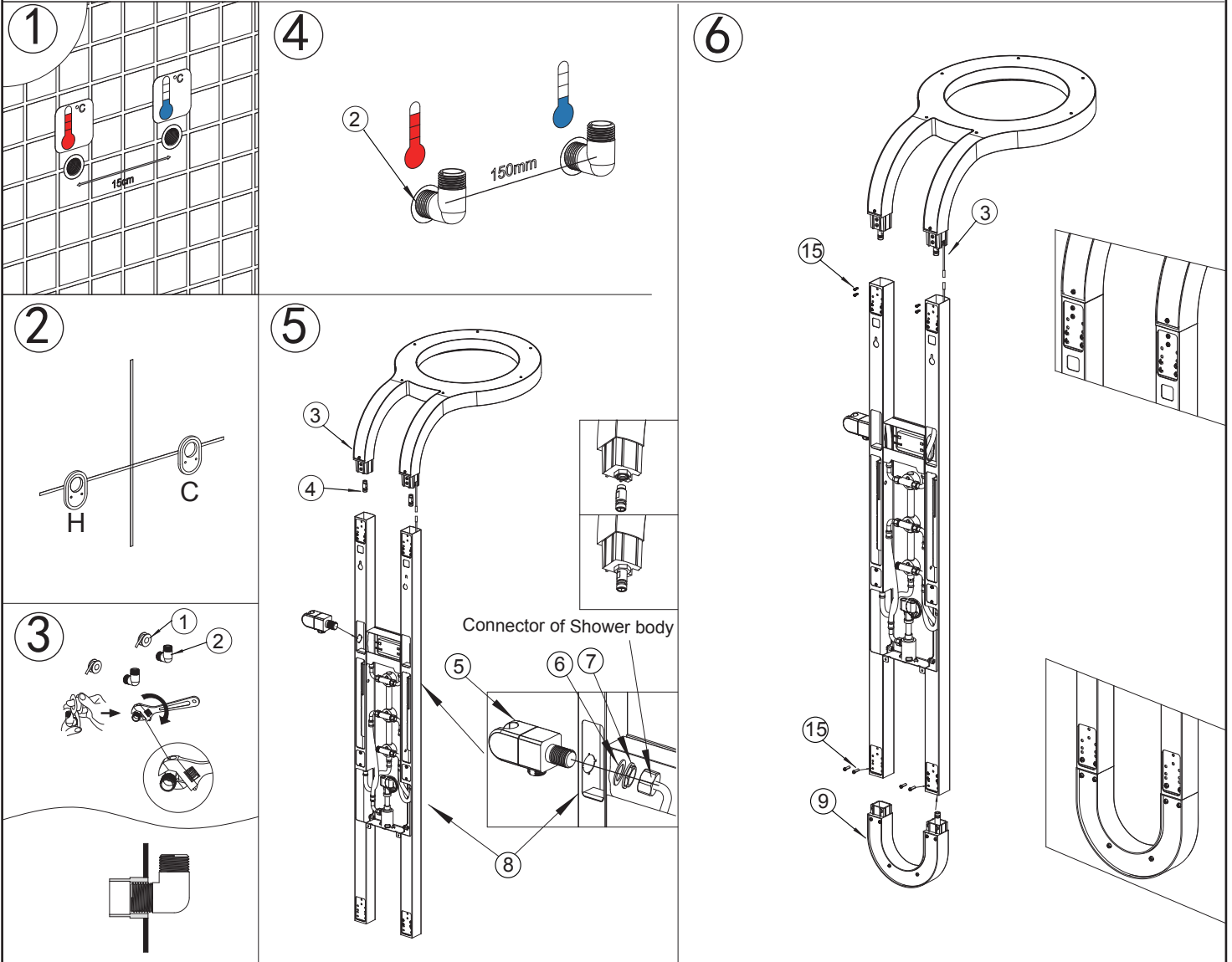
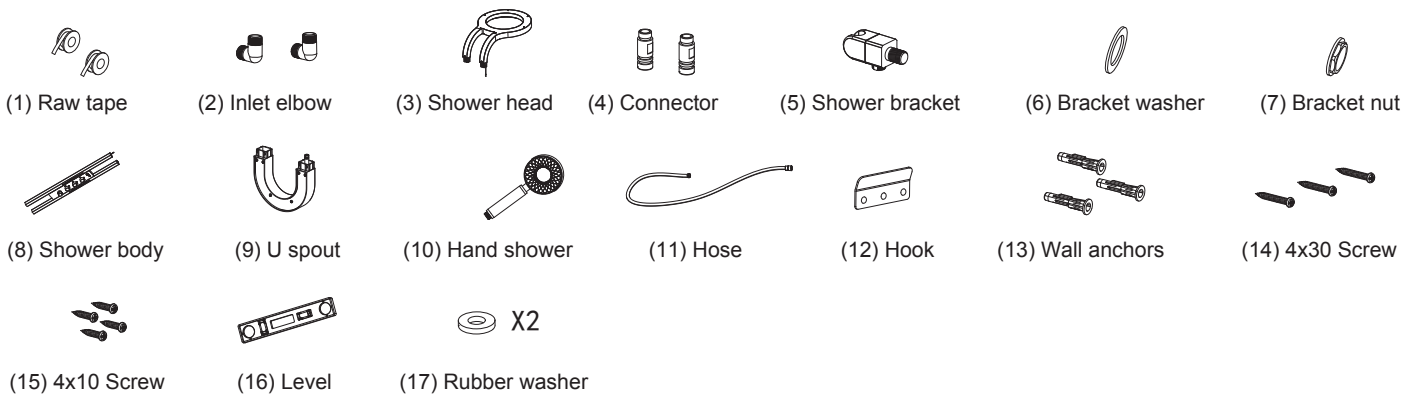
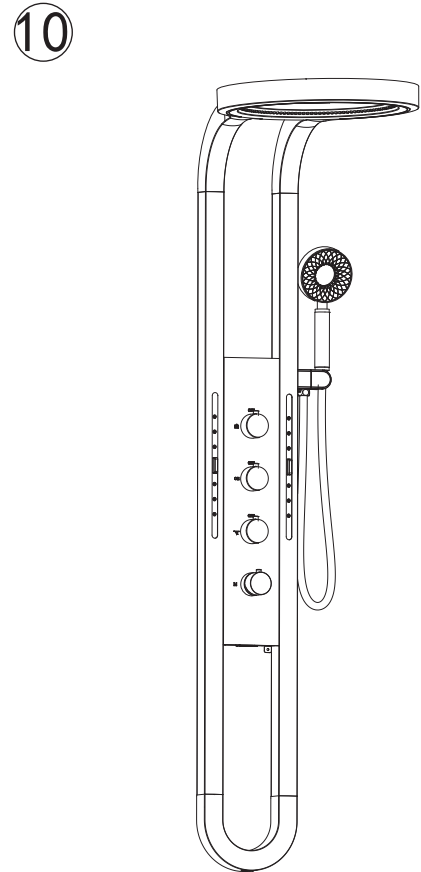
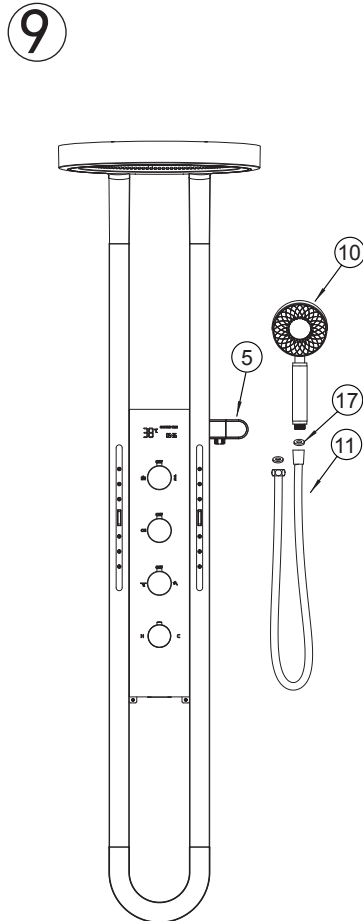
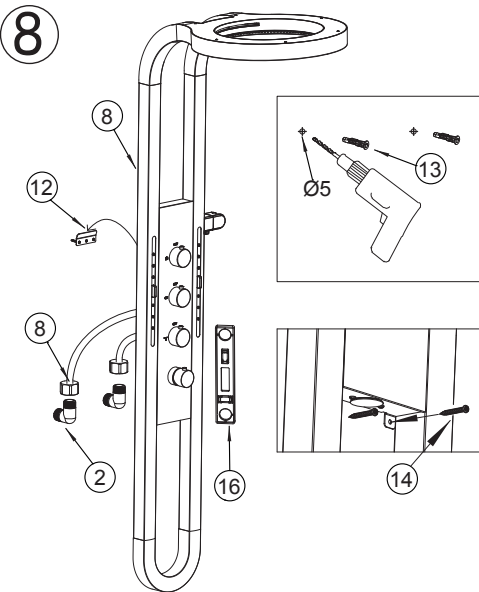
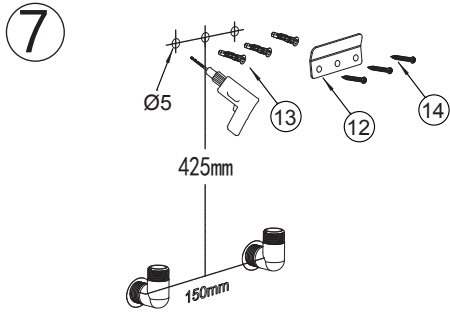
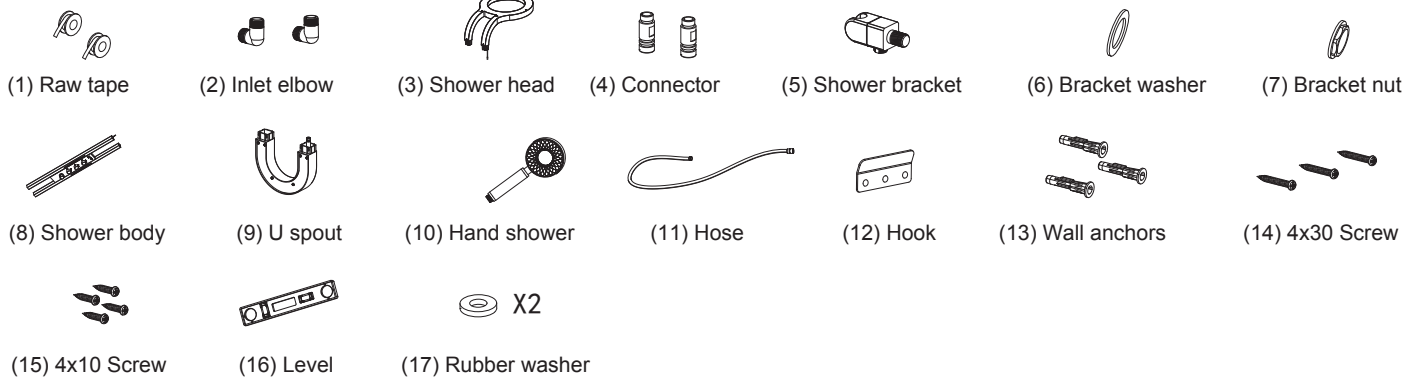


# SF5100-S INSTALLATION



## Product Installation Manual

1. The distance between the water pipe centers is 15 cm, and the two holes are aligned on a parallel line.
2. Before installation, remove any debris from inside the water pipes. The water supply pipe must strictly follow the standard: hot water on the left, cold water on the right.
3. Wrap the raw tape (1) around the wall-inserted end of the inlet elbow (2), then screw the inlet elbow (2) into the wall pipe.
4. Keep the inlet elbow (2) facing vertically upward and control the distance from the wall surface.
5. Screw connector (4) into the shower head (3) and tighten it. Insert the shower bracket (5) into the side hole of the shower body (8), then insert the bracket washer (6) and bracket nut (7) from inside the shower body (8) in sequence and tighten them. Screw the hose connector on top of the shower body into the bracket threads (5) and tighten.
6. Connect the wire end of the shower head (3) to that of the shower body (8) and ensure a tight connection. Align the shower head (3) with the hole and insert it into the top pipe of the shower body (8), then fasten it with the 4x10 screw (15). Align the U spout (9) with the hole and insert it into the bottom pipe of the shower body (8), then also fasten it with a 4x10 screw (15).



7. Measure 425 mm above the center of the wall inlet connector and mark the center point for the hook (12). Drill a hole, insert the wall anchor (13), and fix the hook (12) in place using the 4x30 screws (14). Hang the shower body (8) onto the hook (12). Use a level to check for horizontal alignment and mark the two holes at the bottom of the glass using a marker.

8. Remove the shower body (8), drill holes at the marked positions, and insert wall anchors (13). Screw the two hose connectors of the shower body (8) into the inlet elbows (2), then hang the shower body back on the hook (12). Insert the 4x30 screws (14) into the bottom holes and tighten them.

9. Insert one end of the hex nut of the hose (11) with washer (17) and screw it into the bracket threads (5). Insert the other end of the hose (11) with washer (17) and screw it into the hand shower (10), then place it into the bracket (5).

10. The final installation effect is shown in the reference diagram.