

CAUTION !

Cement grout film removers often contain aggressive chemicals. They can damage the surface of the recessed holder. Please be sure to rinse the drain thoroughly after using tile and joint cleaners. Do not use abrasives and/or sharp/scraping objects to clean the drain. Do not place corrosive products, such as steel or aluminium (spray) cans, directly on the stainless steel.

Care & Maintenance

After installation, some aggressive substances such as sealant, adhesive, mortar may cause “yellow spot” or grow in the surface structure and form unsightly “pools”, and damage the surface.

- Periodically clean the fixture with warm water, a soft microfiber cloth, and (if necessary) soap.
- Rinse and scrub the fixture with warm water only. Avoid hard water or high mineral content water.
- Remove the material left after finishing, adhesive or mortar residue, if there is any. Clean the surface and accessories thoroughly and carefully.
- To reduce the chance of scratching, take care to wipe in the direction of the grain (direction of striations).
- Do not use abrasive cleaners, rubbing alcohol, detergents, chlorine bleach-based cleaners, aggressive chemicals, abrasive cleaning pad, or harsh polishes on the surface. Use of such substance may void the warranty.
- If you are using a chlorine bleach-containing cleaner in your shower, make sure that you avoid the holder surface and promptly remove any residue that may end up on the surface.



Acidic Cleaners



Bleach



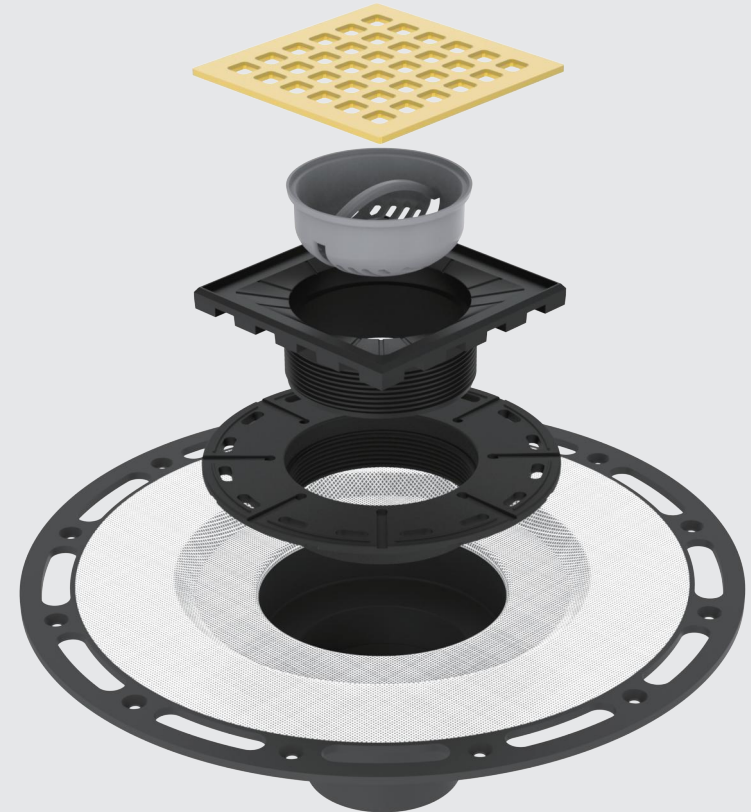
Strong Cleaners



NO Abrasive Tools

Prohibited: Acidic cleaners, bleach, strong cleaners, brushes
Only use soft cleaning pads and brooms to clean the surface of the product.

VERTICAL OUTLET DRAIN

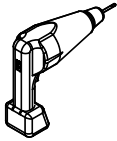


INSTALLATION GUIDE

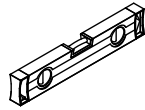
RECOMMENDED TOOLS



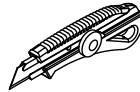
CRESCENT WRENCH



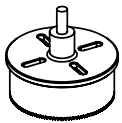
DRILL



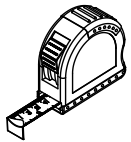
LEVEL RULER



UTILITY KNIFE



HOLE SAW



MEASURING TAPE



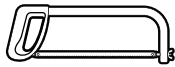
SQUARE



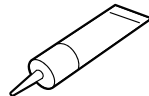
PENCIL



SAFETY GLASSES



HACKSAW



SILICONE ADHESIVE SEALANT

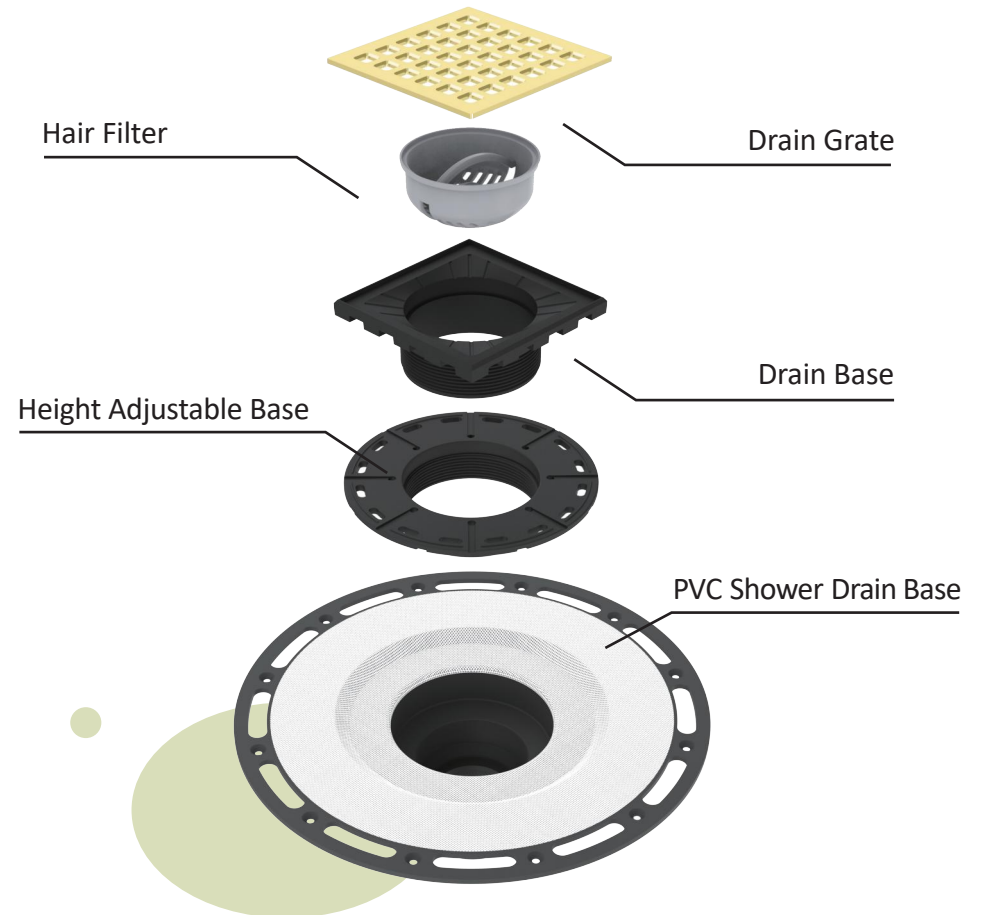


CAULKING GUN

WARNING!

Please check the product before installing it as to ensure that it is not damaged.
Damaged products should not be built in.

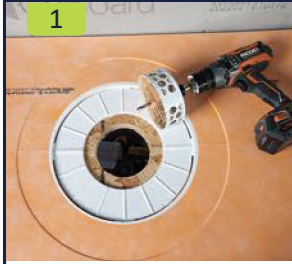
ACCESSORIES NAME



Discription:

- Tiled showers rely on waterproofing membrane beneath the tiles and grout. Mondeway offers anumber of options to ensure compatibility with different floor structures.
- The installation details shown set out to provide the designer with integrated solutions to wet roomfloor drainage identifying preparation, installation and construction processes required to instalwaterproof channels and floor drains in level threshold wet room environments.

CUT HOLE IN SUBFLOOR / INSTALL TRAY



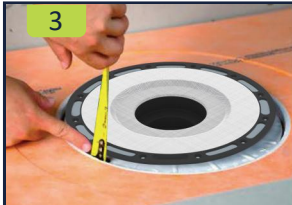
CUT THE SUBFLOOR HOLE:

Begin the installation by cutting a hole in the subfloor in the optimal drainage position. The optimal cutout size is a 5" circle. This will give enough room for the flange to fit easily while still providing good support under the flange. The maximum cutout size is a 5.5" circle. Holes larger than 5.5" will not provide adequate support and will lead to possible shower failure.



INSTALL SHOWER TRAY:

Install the shower tray according to the manufacturer's instructions. Ensure the shower tray is set with 100% mortar coverage on a flat, level surface relative to the subfloor. The shower drain pipe must be centered within the subfloor and tray cutout.



DRY FIT:

Dry fit the connecting flange to the drain and measure the distance from the bottom of the flange to the ridges on the pre-formed shower tray.



CUT THE DRAIN PIPE:

Using the measurement from the previous step, proceed to cut the drain pipe. Be sure to take into account the blade slot to avoid cutting the pipe too short. In most cases, the drain pipe will not stick to the trap (P), which allows you to remove the pipe for cutting. If the pipe is already glued in place, you will need to use an internal pipe cutter.



CHECK THE FIT:

Dry fit one more time to check that all pipe connections are fully seated and that the flange can rest firmly in the preformed shower tray. Use the appropriate cement to glue the drain pipe into the trap (P).

INSTALLING THE FLANGE / WATERPROOFING



MORTAR:

Using a flat trowel, apply thin-set mortar at an angle from edge to edge on the preformed shower tray groove. Then completely fill the mortar under the flange of the cavities with mortar.



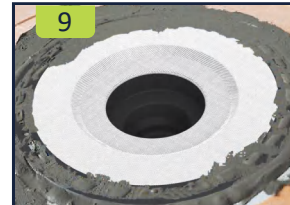
ADHESIVE:

Apply the appropriate solvent for your installation, following the instructions for the specific solvent or cement you are using. Be sure to use ABS cement for ABS systems or PVC primer and PVC cement for PVC systems.



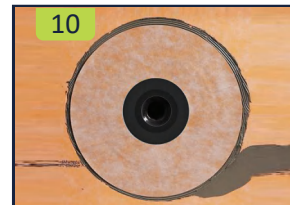
INSTALLATION:

Immediately install the union flange, tightening it firmly and embedding it in the thin-set mortar. As the flange makes contact with the shower pan, turn the flange 45 degrees counterclockwise and then 45 degrees clockwise to fully embed the flange in place and fully seat the union flange socket on the drain pipe.



SECURE:

Secure the flange with stainless steel screws to eliminate the risk of damaging plumbing or electrical work. Make sure the screws do not penetrate completely through the subfloor. If screws cannot be used, as is the case on a concrete subfloor, use a 5-gallon bucket to hold the flange while the thin-set mortar cures.



WATERPROOFING:

Complete the waterproofing process by installing a sheet of membrane. Most foam shower trays come with a pre-cut piece; just make sure it's waterproof up to the edge of the groove. Pull or roll back the membrane and verify that it is 100% waterproof for mortar transfer and reinstallation. Finish this step by waterproofing the entire shower.

Important Notes:
This drainage kit is compatible with both sheet-applied membranes and paint-over liquid-applied membranes. Waterproofing should be applied DIRECTLY to a CLEAN, DRY flange. Always follow the waterproofing manufacturer's instructions completely.

GRILL INSTALLATION KIT / GROUT + GRID

11



DRY-FITTING AND CUTTING:

Place the entire grate installation kit on the tile trim, flange, and dry-fit your tile. Make any necessary cuts and ensure everything fits properly. At this point, the grate riser may be lower than your tile; that's okay. We'll address that in a later step.

12



FITTING RING:

Apply mortar/thin-set mortar to the drain body opening approximately 3/4 of the way full. (Do not allow thin-set mortar to enter the drain.) Place the fitting ring into the mortar at approximately the same time as the dry-fit location and rotation. Tighten completely and remove excess mortar.

13



GRID RISER:

Apply mortar to the bottom of the grill riser, making sure it covers all 4 corners and edges. Then insert it into the trim ring. This mortar will support the grill riser and other vertical supports. During this step, you should leave the grill riser approximately 1/8" higher than your tile. You'll touch on this in the next step.

14



SET TILE:

Use the flat side of your trowel to fill the holes and gaps around the perimeter of the trim ring. Spread thinset mortar over the trim ring with the flat notch and set the tile. Then press the tile lifter down until it is flush with or slightly lower than the tile. Remove excess mortar (especially black grout).

15



GROUT:

After your mortar has dried, we recommend applying additional grout when re-gluing around the grout edge: install the tile and wipe it very gently to leave that joint nice and full. This will greatly reduce the visibility of the black grout edge surrounding the grate.

16

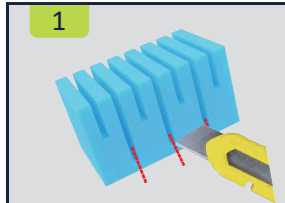


INSTALL THE GRATE:

After construction is complete, your shower is 100% finished and ready for use. Remove the temporary installation plate by inserting a trowel into the groove and lifting it up. Place your FFX Grate and you're done.

Shower Drain Base with Foam Installation Blocks Manual

1



Cut the Foam Blocks:

Use knife to cut along the long slit on the foam block, and divide it into four separate pieces.

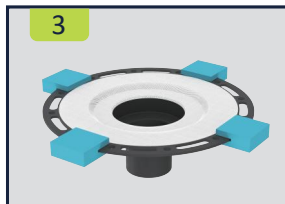
2



Trim the Edges:

After cutting, ensure the edges of the foam pieces are smooth and even

3



Attach Foam Blocks:

Insert the four foam pieces into the corresponding slots on the edges of the drain base's circular disk.

4

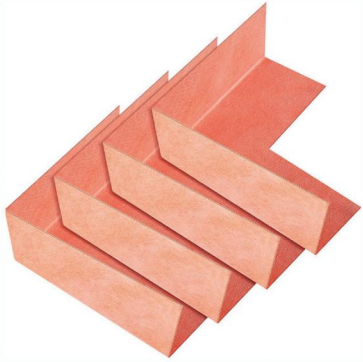


Install the Drain Base:

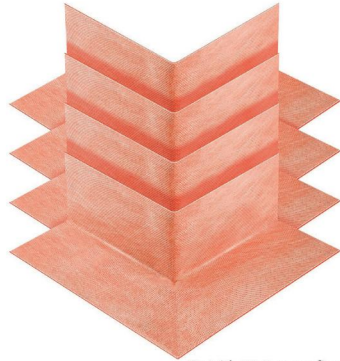
Place the disk with the foam blocks into the reserved installation hole on the floor and connect the drainage pipe.

WATERPROOFING LINE

Inside and Outside Waterproofing Corner Shower Seamless Membrane Corner



Inside Waterproofing Corner



Outside Waterproofing Corner

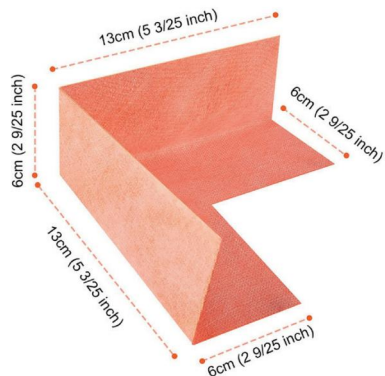


Specification:

Inside Waterproofing Corner
Item No.: MW-WP-07
Material: Polyethylene
Color: Orange
Size: as the picture shows



PRODUCT SIZE

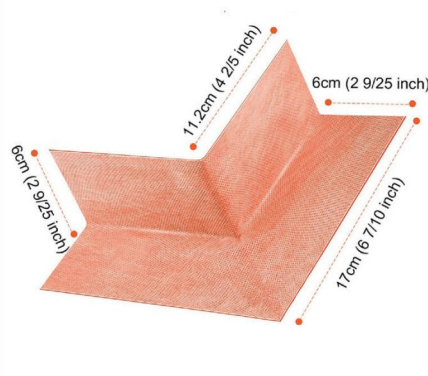


Specification:

Outside Waterproofing Corner
Item No.: MW-WP-08
Material: Polyethylene
Color: Orange
Size: as the picture shows



PRODUCT SIZE



WATERPROOFING LINE

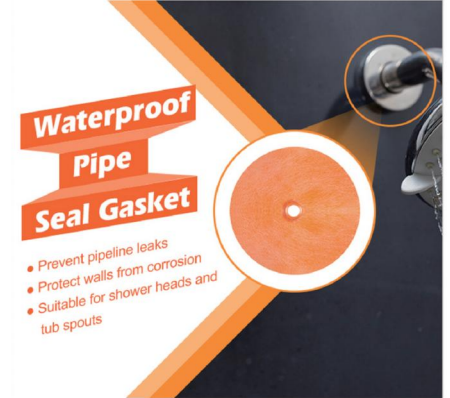
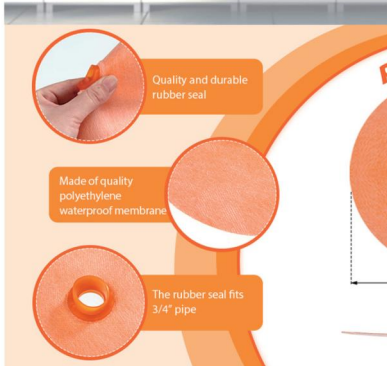
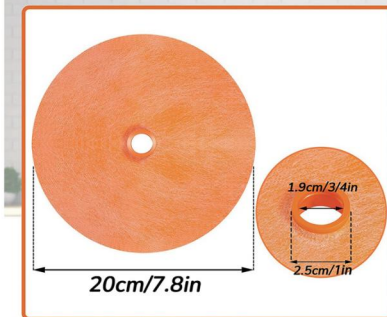
Waterproofing Seal with Gasket 19mm (3/4 Inch) Opening Seals for Shower Valve and Shower Head



Specification:

Waterproofing Seal with Gasket
Item No.: MW-WP-09
Material: Polyethylene&Rubber
Color: Orange
Size: as the picture shows

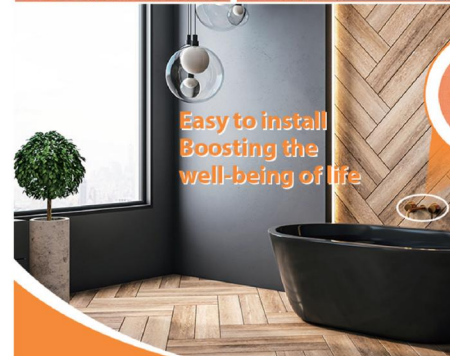
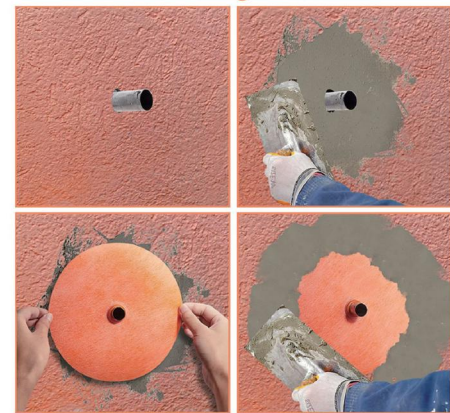
SIZE product size



Waterproof Pipe Seal Gasket

- Prevent pipeline leaks
- Protect walls from corrosion
- Suitable for shower heads and tub spouts

Product usage scenarios



Easy to install
Boosting the
well-being of life

WATERPROOFING LINE

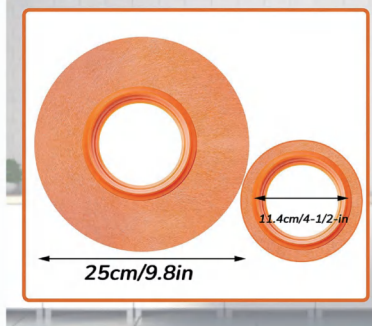
114mm (4-1/2 Inch) Mixing Valve Seal Waterproofing Round Pipe Gasket Seal Thick Seals for Shower Valve and Shower Head



Specification:

Mixing Valve Seal Waterproofing
Item No.: MW-WP-10
Material: Polyethylene&Rubber
Color: Orange
Size: as the picture shows

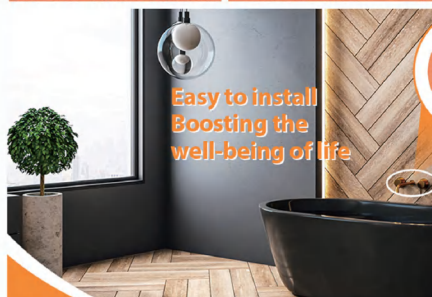
SIZE product size



USAGE SCENARIOS

Free to make the openings in the cement board and tile a comfortable size without fear of leaking

Product Usage Scenarios



Easy to install
Boosting the
well-being of life